

SDK Quick Start

For Microedge Data Loggers

Please read this instruction before using the data loggers. For complete instruction please refer to Microedge Data Logger User's Manual and SiteView SDK User's Manual in the enclosed CD.

1. Configuration for Windows 8 User

Please skip this section if your operating system is NOT Windows 8, 10!

For Windows 8,10 user, in order to install the USB Driver properly, the following steps must be followed before the installation of Site View SDK software:

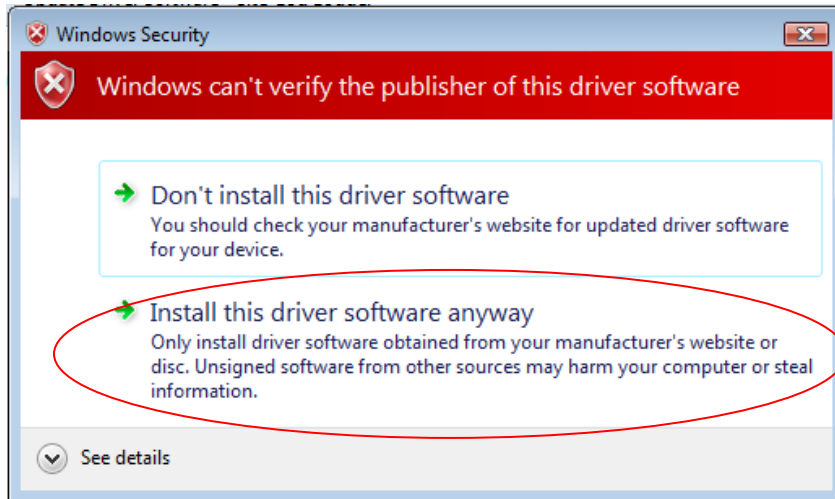
- A. Mouse over the lower-right corner of the screen, then select **Settings**.
- B. Select **Change PC Settings**.
- C. Navigate to **General** and under **Advanced Startup**. Click **Restart Now**.
- D. Now Windows 8 will restart in the advanced menu options, click on **Troubleshoot**.
- E. Click on **Advanced options**.
- F. Click the **Startup Settings** option from the menu.
- G. The Startup Settings will allow you to change various Windows configuration options. Click **Restart**.
- H. Now Windows 8 will reboot. But instead of going to the Desktop it will start in the **Startup Settings** page. Choose option: **7) Disable driver signature enforcement** by pressing F7 or the number 7. Then the windows will boot to the mode allowing the USB Driver to be installed.

Windows 8,10 is now ready for Site View SDK installation. For detailed configuration please visit:
<http://www.microedgeinstruments.com/Win8Configurations.pdf>

2. Install SiteView SDK and USB Driver

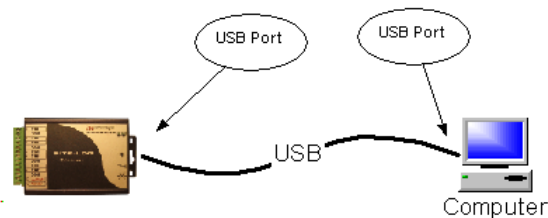
Insert the included CD to the CD Drive. The installation should start to run automatically. Follow the on-screen instructions to complete the installation.

Depending on the operating system, you may see the dialog similar to the one below displayed. Please select **“Continue Anyway”** or **“Install this driver software anyway”** to allow the software and the driver to be installed.



3. Connect Data Logger to Computer

Connect the logger to the computer with the accompanied USB cable to complete the USB driver installation. Windows Vista and Window 7 will automatically complete the installation without user intervention.

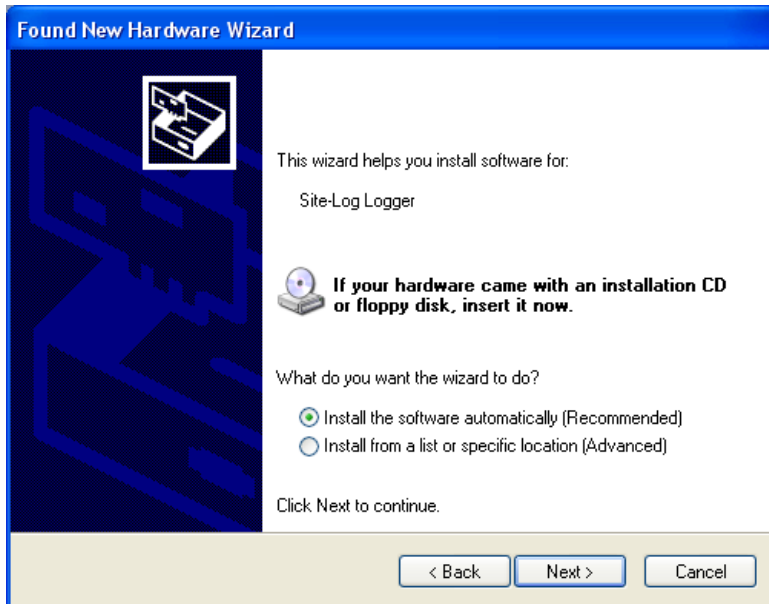


For Windows XP User:

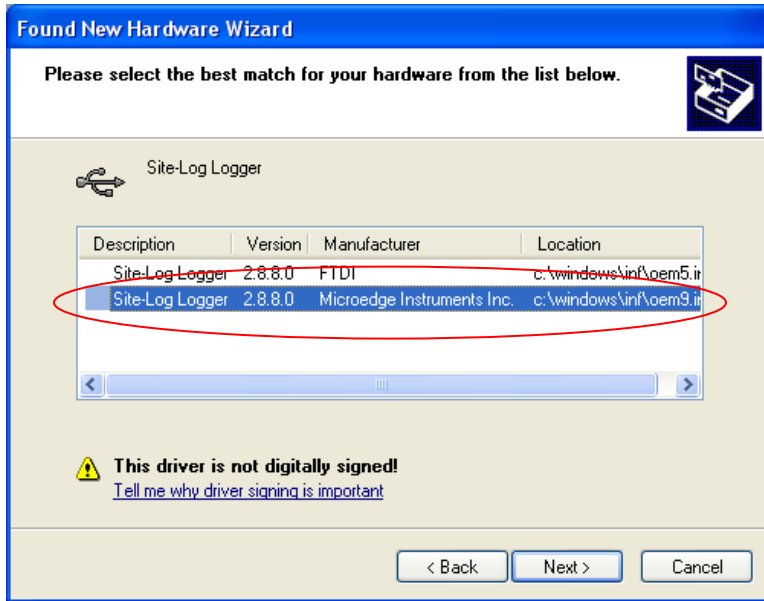
The following dialog window will appear:



Select "No, not this time" from options available and then Click "Next >" to proceed with the installation.



Select "Install the software automatically (Recommended)" as shown in the above figure and then click "Next >".

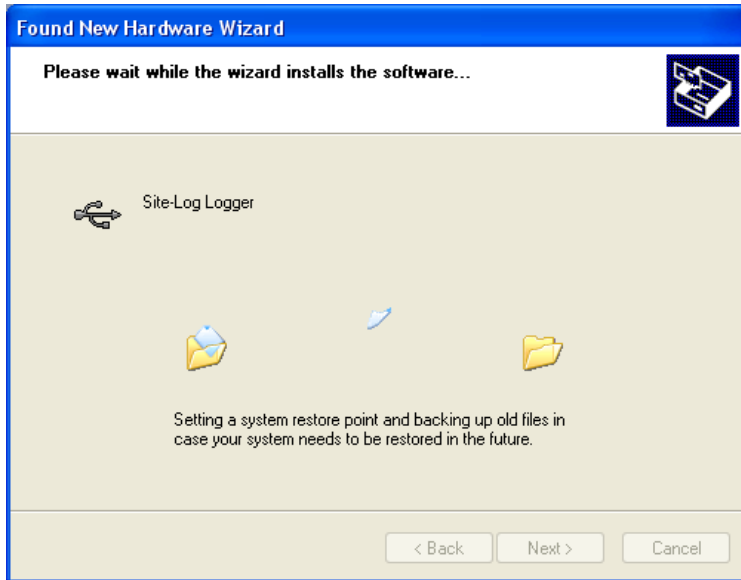


Select the item with Manufacturer of Microedge Instruments Inc and click “Next>” to proceed.

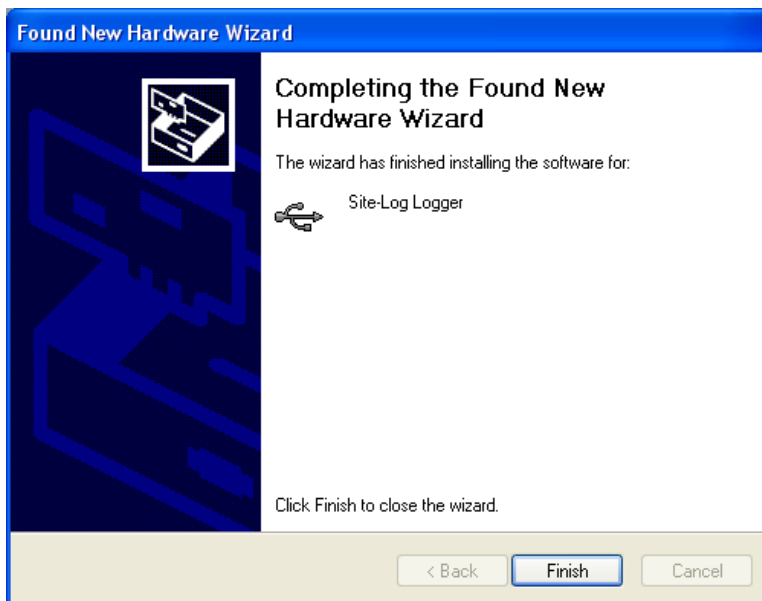
In the following message dialog, click "Continue Anyway" to continue with the installation:



The screen below will be displayed as Windows copies required driver files:



Windows should then display a message indicating the installation was successful:

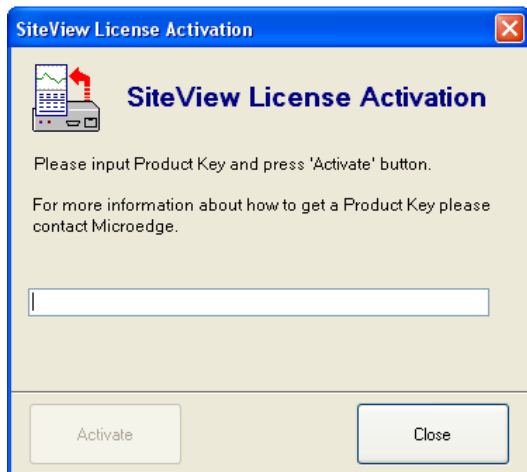


4. Activate SiteView SDK

Find sample code either under : “SiteView SDK Demo DOTNET” or “SiteView SDK Demo VB6” folder in the enclosed CD. Copy the whole folder to your PC’s hard drive.

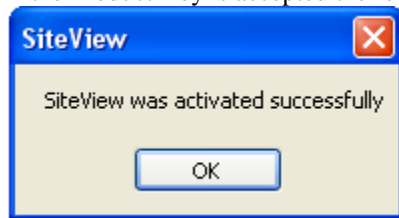
Refer to the instructions in “SiteView SDK Manual.pdf” under Product Manual folder on how to use the SDK in your software.

When the SDK is being invoked and if the product key has not been entered, the following dialog will show:



Enter the product key. **You can find the product key on the enclosed CD case.**

If the Product Key is accepted the following confirmation dialog will appear:



Click "OK" button to finish the activation.