

Quick Start

For Microedge Data Loggers

Please read this instruction before using the data loggers. For complete instruction please refer to Microedge Data Logger User's Manual.

1. Configuration for Windows 8, 10 User

Please skip this section if your operating system is NOT Windows 8 or 10!

For Windows 8,10 user, in order to install the USB Driver properly, the following steps must be followed before the installation of SiteView software:

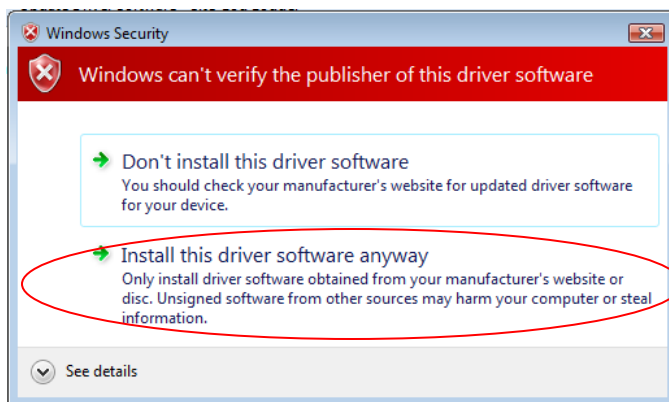
- A. Mouse over the lower-right corner of the screen, then select **Settings**.
- B. Select **Change PC Settings**.
- C. Navigate to **General** and under **Advanced Startup**. Click **Restart Now**.
- D. Now Windows 8 will restart in the advanced menu options, click on **Troubleshoot**.
- E. Click on **Advanced options**.
- F. Click the **Startup Settings** option from the menu.
- G. The Startup Settings will allow you to change various Windows configuration options. Click **Restart**.
- H. Now Windows 8 will reboot. But instead of going to the Desktop it will start in the **Startup Settings** page. Choose option: **7) Disable driver signature enforcement** by pressing F7 or the number 7. Then the windows will boot to the mode allowing the USB Driver to be installed.

Windows 8,10 is now ready for SiteView installation. For detailed configuration please visit:
<http://www.microedgeinstruments.com/Win8Configurations.pdf>

2. Install SiteView and USB Driver

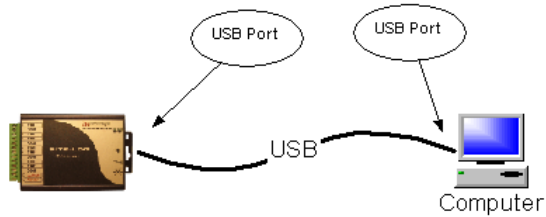
Insert the included CD to the CD Drive. The installation should start to run automatically. Follow the on-screen instructions to complete the installation.

Depending on the operating system, you may see the dialog similar to the one below displayed. Please select “**Continue Anyway**” or “**Install this driver software anyway**” to allow the software and the driver to be installed.



3. Connect Data Logger to Computer

Connect the logger to the computer with the accompanied USB cable to complete the USB driver installation. Windows Vista and Window 7 will automatically complete the installation without user intervention.

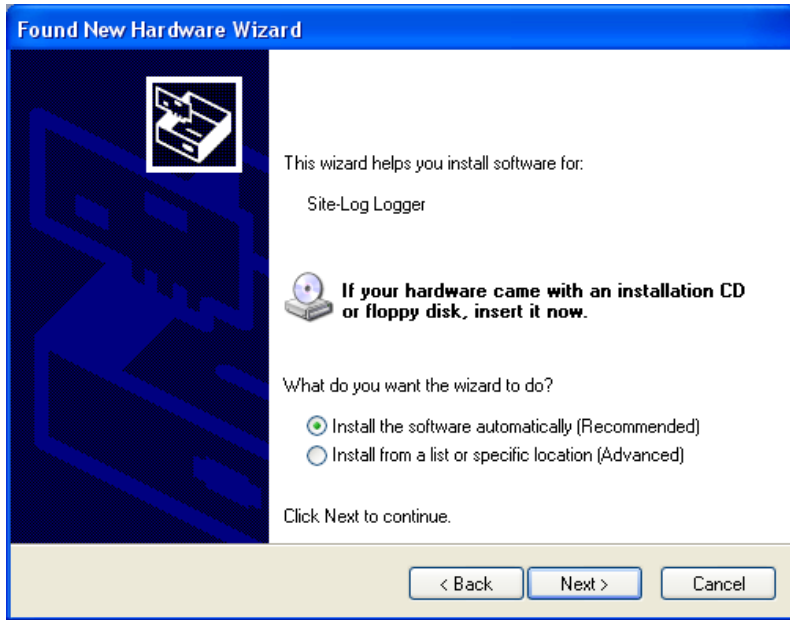


For Windows XP User:

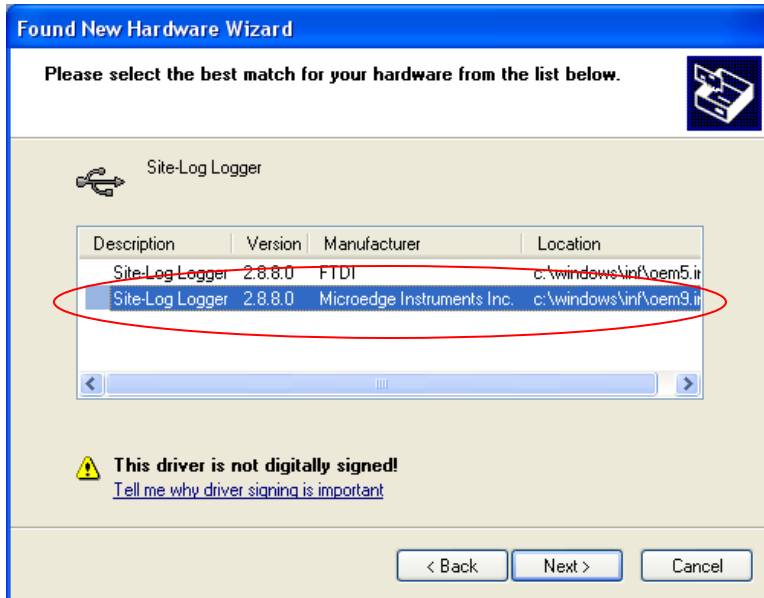
The following dialog window will appear:



Select "No, not this time" from options available and then Click "Next >" to proceed with the installation.



Select "Install the software automatically (Recommended)" as shown in the above figure and then click "Next >".

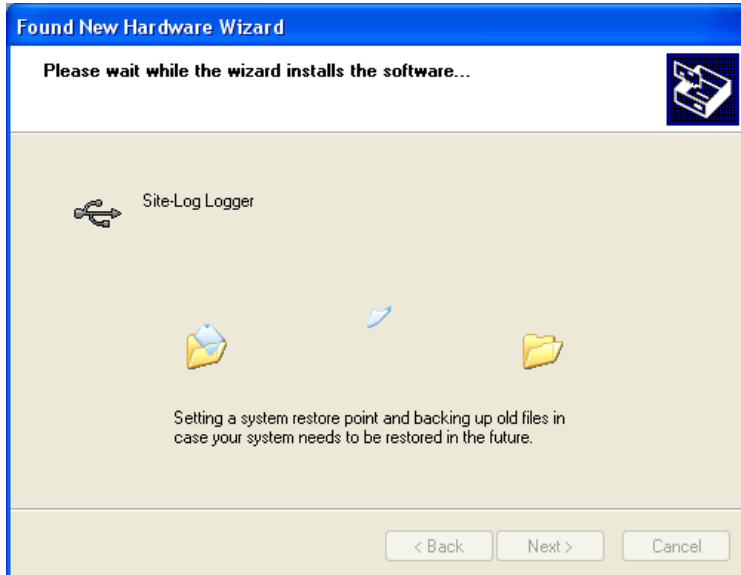


Select the item with Manufacturer of Microedge Instruments Inc and click "Next>" to proceed.

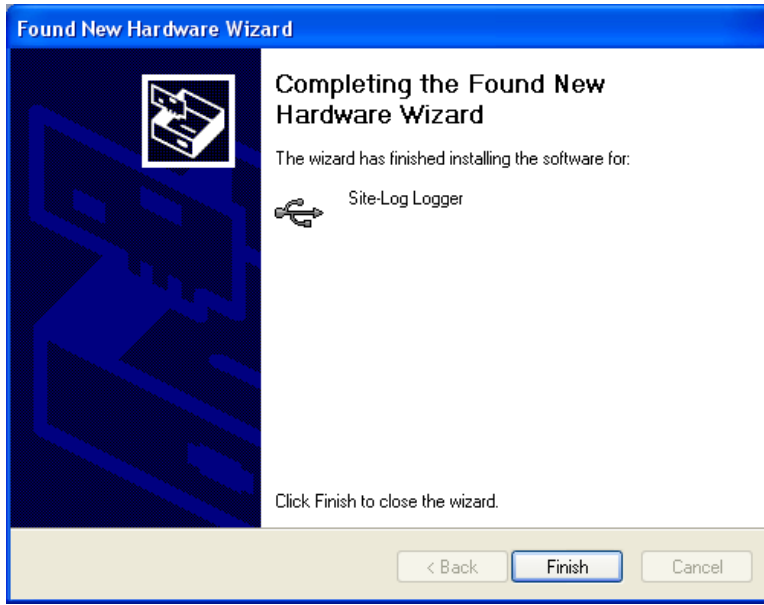
In the following message dialog, click "Continue Anyway" to continue with the installation:



The screen below will be displayed as Windows copies required driver files:



Windows should then display a message indicating the installation was successful:

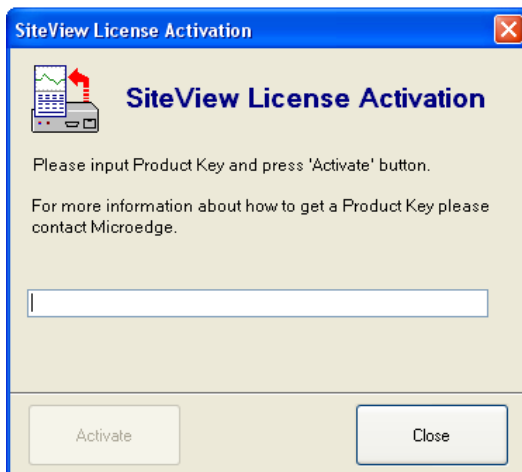


4. Activate and Run SiteView

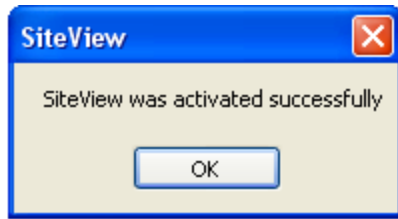
Find SiteView icon on the desktop of the computer and double click it to launch SiteView:



On the pop-up **License Activation** dialog enter the product key you obtained. **You can find the product key on the enclosed CD case.**



If the Product Key is accepted the following confirmation dialog will appear:

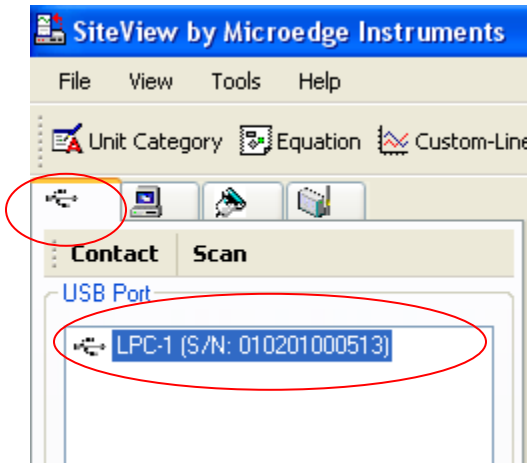


Click "OK" button to finish the activation. From now you can start using SiteView.

5. Communicate with Logger

Communicate With Data Logger

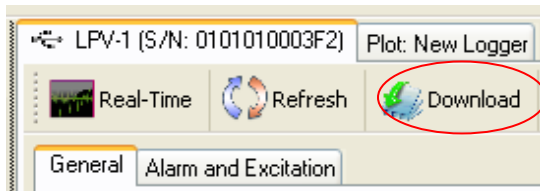
After you connect the data logger to the computer's USB port, SiteView will scan the port and load the model, the serial number of the logger and create an icon under the USB Tab:



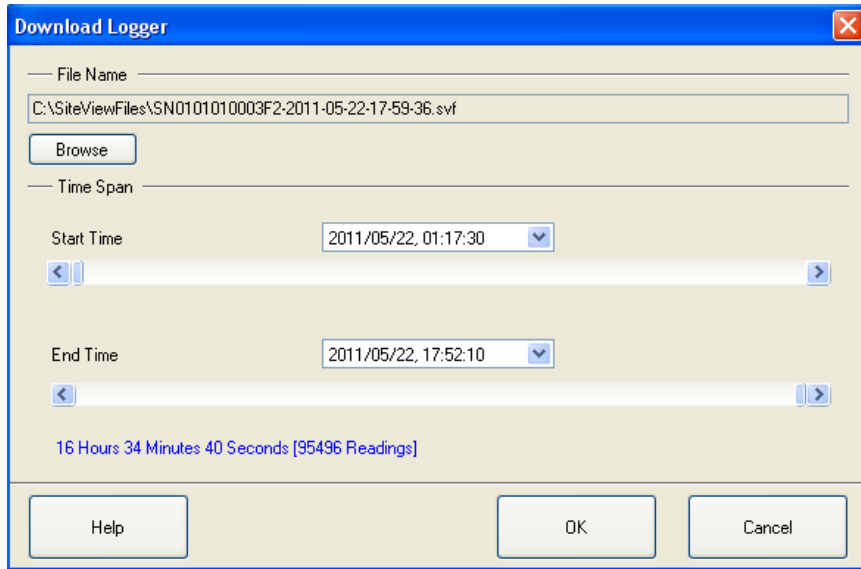
Double click on the icon to start the communication with the data logger. On the success of the communications, the status page of the logger will be displayed on the right side area.

6. Download Data

Click on **Download** button on the status page to display download dialog:



Choose the desired time span of your interest and click OK button to start downloading:



On the success of the download, the plot will be displayed:

